



REV	ECN #	DESCRIPTION	DRAWING	APPROVED	DATE
A		NEW RELEASE	JIANG		2018/07/19

PRODUCT NO. _____

PATC01-24 C X XX XX-XX
 ① ② ③ ④ ⑤ ⑥ ⑦

① PRODUCT SERIES:

PATC01: USB TYPE C PLUG WITH PCB

② PIN NO.:

24: 24PIN

③ HOUSING MATERIAL:

C: LCP

④ COLOR:

B:BLACK

W:WHITE

⑤ FINISHING:

15: Au300", Sn1000"

16: Au50", Sn1000"

05: Au10", Sn1000"

⑥ SERIES NO.:

00-WITHOUT SPRING

03-WITH SPRING

⑦ PCB TYPE:

07: 音频板 IC BSS3100-S BGA48

NOTES:

1.MATERIAL

1.1.HSG: HIGH TEMPERATURE THERMOPLASTIC UL94V-0 BLACK;

1.2.CONTACT: COPPER ALLOY

1.3.LATCH: STAINLESS STEEL

1.4.EMI SPRING: STAINLESS STEEL

1.5.SHELL: STEEL

2. FINISH:

2.1 CONTACT:

0.762um [30u"] MIN. Au PLATING ON CONTACT AREA.

2.54um [100u"] MIN. TIN PLATING ON SOLDERAL AREA.

1.27um [50u"] MIN.NICKEL UNDERPLATING ON ALLOWER AREA.

2.2 SHELL

NI PLATING OVERALL

2.3 LATCH:

2.54um [100u"] MIN. TIN PLATING ON SOLDERAL AREA.

1.27um [50u"] MIN.NICKEL UNDERPLATING ON ALLOWER AREA.

3.ELECTRICAL CHARACTERISTICS:

3.1 CONTACT RESISTANCE: 40mΩ MAX.(INITIAL)

3.2 INSULATION RESISTANCE: 100MΩ MIN.

3.3 DIELECTIC WITHSTANDING VOLTAGE: 100V AC FOR 1 MINUTE.

4.MECHANICAL CHARACTERISTICS:

4.1 INSERTION FORCE: 0.5~2.0KG(SN~20N).

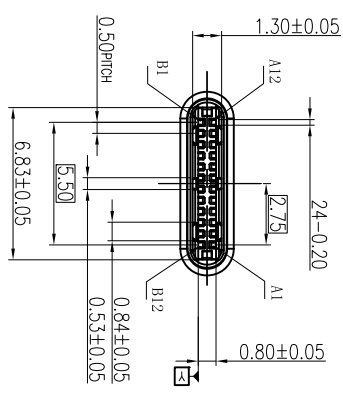
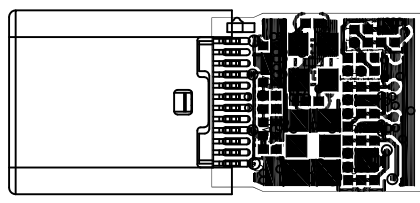
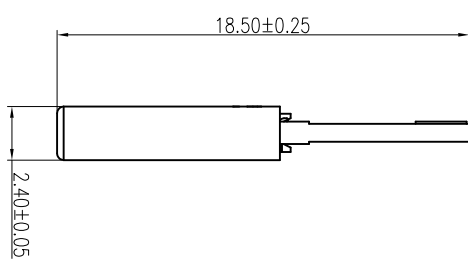
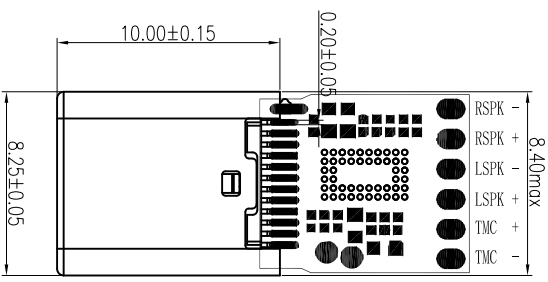
4.2 WITHDRAL FORCE: 0.8~2.0KG(8N~20N)

4.3 DURABILITY:10000 CYCLES

5.ENVIRONMENTAL CHARACTERISTICS:

5.1 OPERATING TEMPERATURE: -30° TO +85°

5.2 STORAGE TEMPERATURE: -40° TO +85°



CONTACT PIN ASSIGNMENT:

PIN	SIGNAL NAME	SIGNAL NAME	PIN
A1	GND	GND	B12
A2	TX1 +	RX2 +	B11
A3	TX1 -	RX2 -	B10
A4	V _{bus}	VBUS	B9
A5	CC1	SBU2	B8
A6	Dp1	Dn2	B7
A7	Dn1	DP2	B6
A8	SBU1	CC2	B5
A9	VBUS	VBUS	B4
A10	RX2 -	TX2 -	B3
A11	RX2 +	TX2 +	B2
A12	GND	GND	B1

CUSTOMER DRAWING

YTCONN

Dongguan YTCNN Electronics Technology Co., Ltd

GENERAL TOLERANCE

X ±0.20

.XX ±0.15

.XXX ±0.10

ANGEL TOLERANCE

X ±3°

XX ±2°

.XXX ±1°

DRAWING JIANG

APPROVED

DATE 2018. 07. 20

TITLE: USB TYPE C PLUG 24Pin ASSY

P/N: 音频板带IC

DRAWING NO. PATC01-24CB1603-07

C-PATC01-07

UNIT	mm	SCALE	1:1	SIZE	A4	SHEET	1 of 1	REV	A
------	----	-------	-----	------	----	-------	--------	-----	---