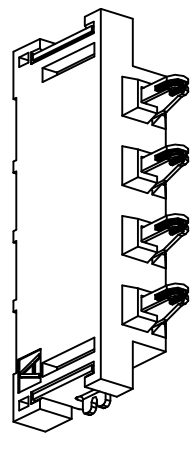
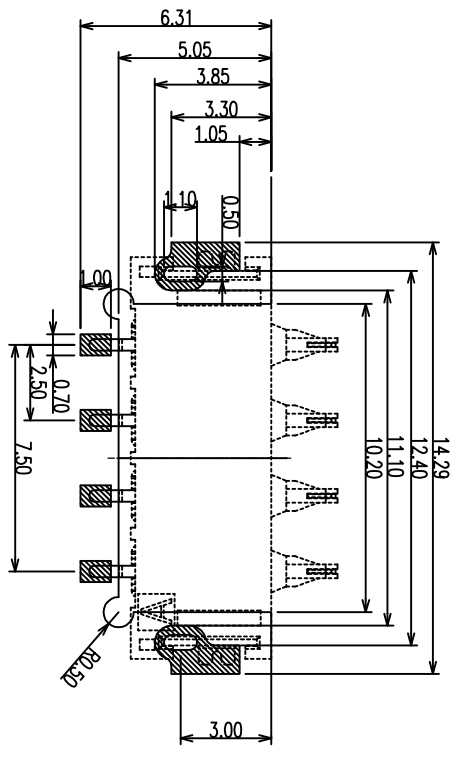
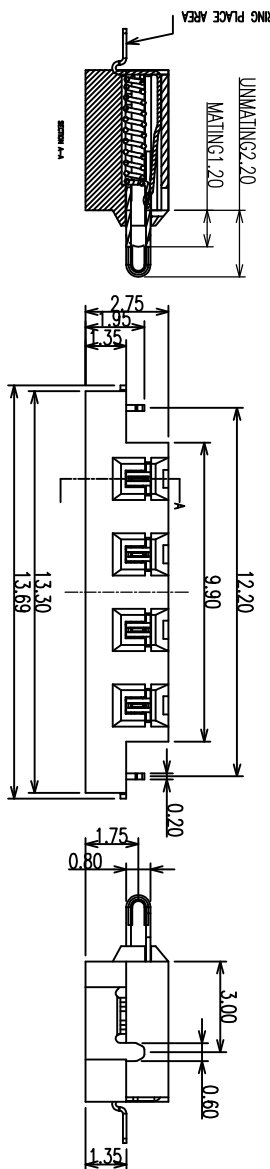
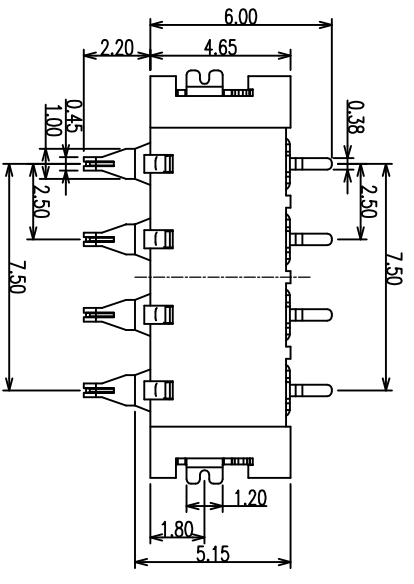


REV	ECON #	DESCRIPTION	DRAWING	APPROVED	DATE
A		NEW RELEASE	DEV1		



- NOTES:
- MATERIAL
 - HOUSING: THERMOPLASTIC; UL 94V-0; COLOR: BLACK
 - CONTACT: COPPER ALLOY T=0.15mm
 - MAIL: STAINLESS STEEL T=0.20mm
 - FINISH
 - CONTACT: 3u" Au PLATING ON CONTACT AREA
100u" Min. Matter-Sn PLATING ON SOLDER TAILS
50u" Min. NICKEL UNDERPLATING OVER ALL
 - MAIL: 50u" Min. NICKEL UNDERPLATING
100u" Min. Matter-Sn OVERALL
 - PRODUCT SPECIFICATIONS:
 - VOLTAGE RATING: 250V
 - CURRENT RATING: 2.0A
 - INSULATION RESISTANCE: 1000MEG OHM MIN
 - OPERATION TEMPERATURE: -55 TO +125
 - DURABILITY: 3000 CYCLES, AFTER TEST THE NORMAL FORCE ATTENUATION CANNOT EXCEED 15%
 - NORMAL FORCE: 60gf Min. AT THE WORKING POSITION

PRODUCT NO.

BT37-04 C B 03-02

① ② ③ ④

PRODUCT SERIES:

① BT37: BATTERY SERIES

② PIN NO.:

04: 4PIN

③ MATERIAL:

C: LCP

④ SERIES NO.:

02: 2.5PITCH, 沉板1.4H

YTCONN

Dongguan YTCONN
Electronics Technology Co., Ltd

**PRAT
DRAWING**

GENERAL TOLERANCE

X ±0.10

.XX ±0.05

.XXX ±0.02

ANGEL TOLERANCE

X ±3°

.XX ±2°

.XXX ±1°

DRAWING

DEV1

TITLE:

4PIN BATTERY 2.5PITCH, 沉板1.4H

APPROVED

DATE

2013.10.06

P/N: BT37-04CB03-02

UNIT

mm

SCALE

1:1

SIZE

A4

SHEET

1of1

REV

A

8

9

10